



EducationVerse

evERP

Connect . Learn . Succeed



[www.educationverse.org](http://www.educationverse.org)



- Established in 2010
- Specializing in Custom Software Development, Database, DevOps and IT maintenance.
- 10+ off-the-shelf products.

- Offshore development team of CFE Solutions.

## EducationVerse Ecosystem

- EdTech Ecosystem comprising multiple products
- evERP is the flagship product of EducationVerse

## evERP Team

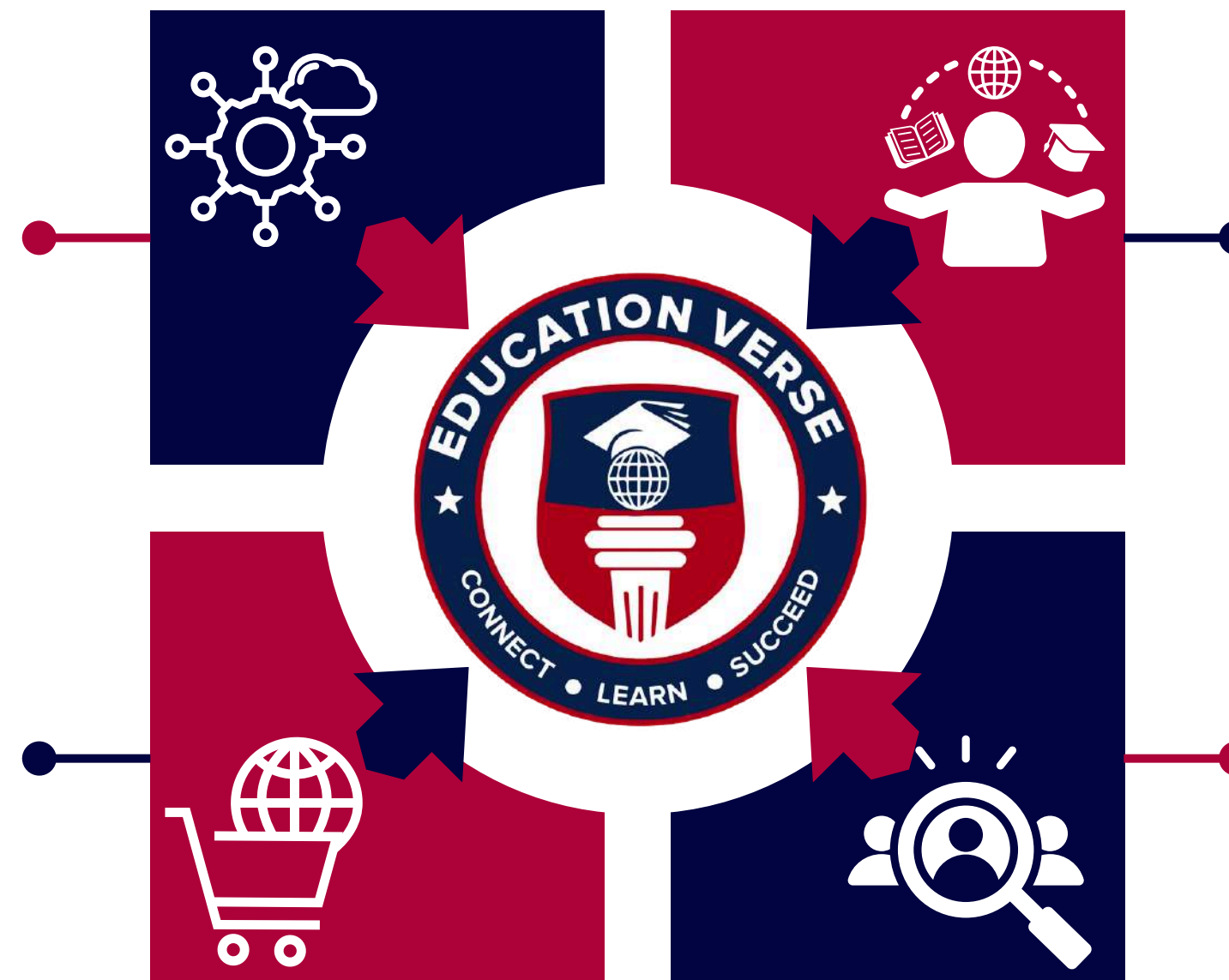
- IT Professionals
- Academic Experts
- Business Analysts
- EdTech Experts
- Gamification Experts
- Finance Experts

# EducationVerse Ecosystem

EducationVerse is a leading EdTech project of CFE Solutions Limited (UK) dedicated to transforming education through an integrated ecosystem designed to support learning providers and learners. Our comprehensive approach covers the full spectrum of educational needs, ensuring seamless management, engaging learning experiences, convenient access to educational resources, and effective recruitment of academic talent.

## evERP

evERP is an all-encompassing Educational ERP designed to manage the entire student life cycle and learning management system for educational institutions.



## evLEARN

evLEARN is an online platform that connects learners and learning providers, making the learning process engaging and immersive.

## evCOMM

evCOMM is a marketplace that connects students and parents with merchants selling uniforms, stationery and books.

## evRECRUITMENT

evRECRUITMENT is a specialized marketplace for academia, connecting job seekers and freelancers with educational institutions for quality academic recruitment.





# evERP: One-Stop Solution!



**Campus Management  
System/ Student Life-  
cycle Management  
System**



**Third party  
Integrations**



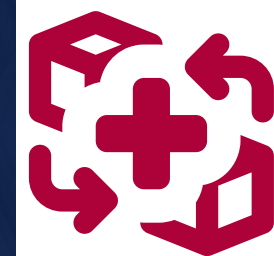
**evERP**



**Learning Management  
System**



**Student Affairs &  
Services**

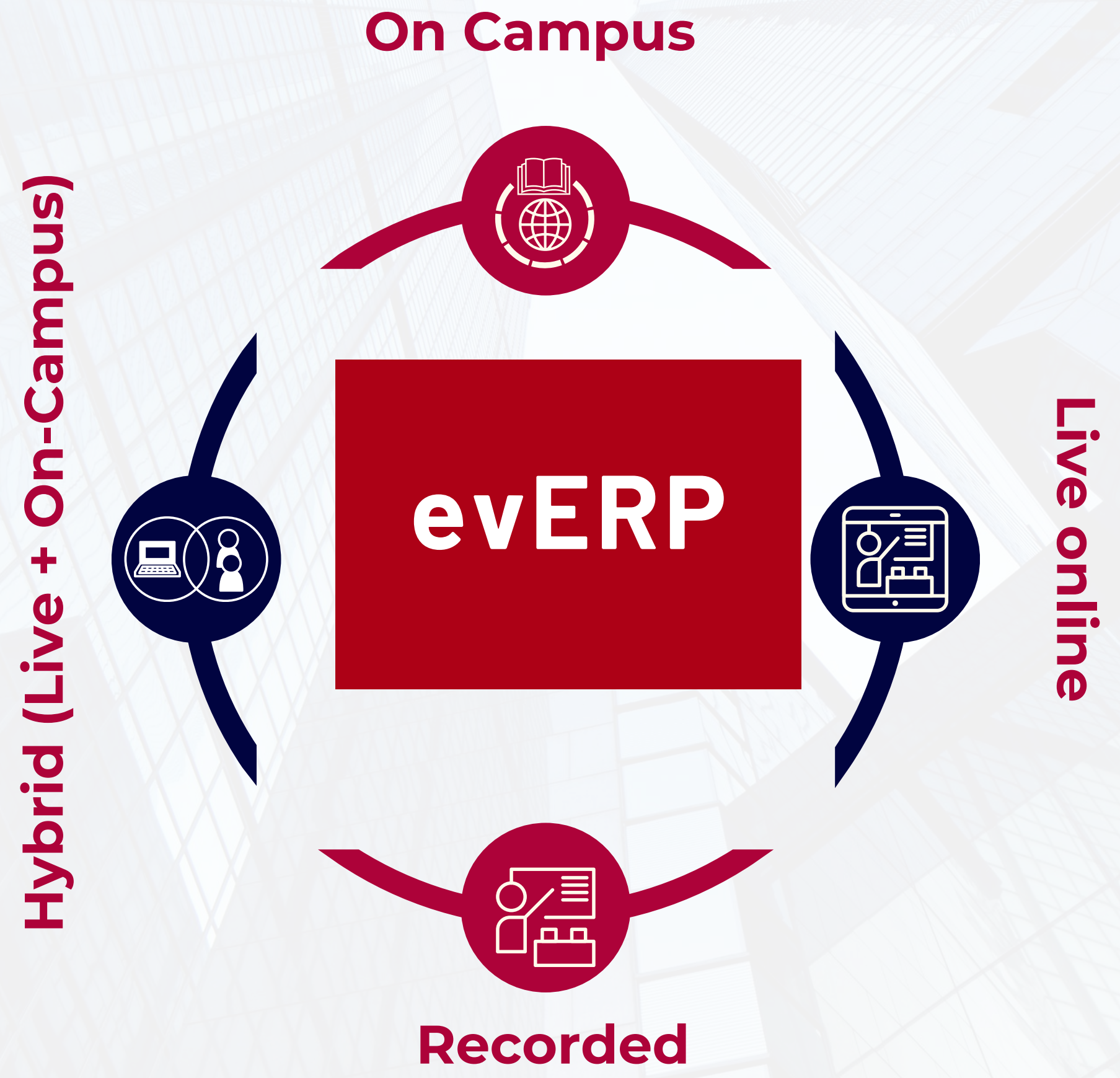


**Add-on Modules**





# Education Modes Supported







# Benefits to Key Stakeholders

## Management

- Coordination & Control
- Systems improvement
- Efficiency/ Time-saving
- Reduced error rate
- Cost cutting
- Quick & effective decision-making

## Student

- Comprehensive portal for learning and administrative needs including student profile, fee, timetable, attendance, Academics, Exams, Results etc.
- Adaptive & Social Learning

**evERP**

## Faculty

- Course authoring
- Time-saving
- Lesser workload
- Reduced errors
- Exam builder

## Alumni

- Alumni Chapters
- Events
- Communication
- Recruitment Opportunities
- Trainings





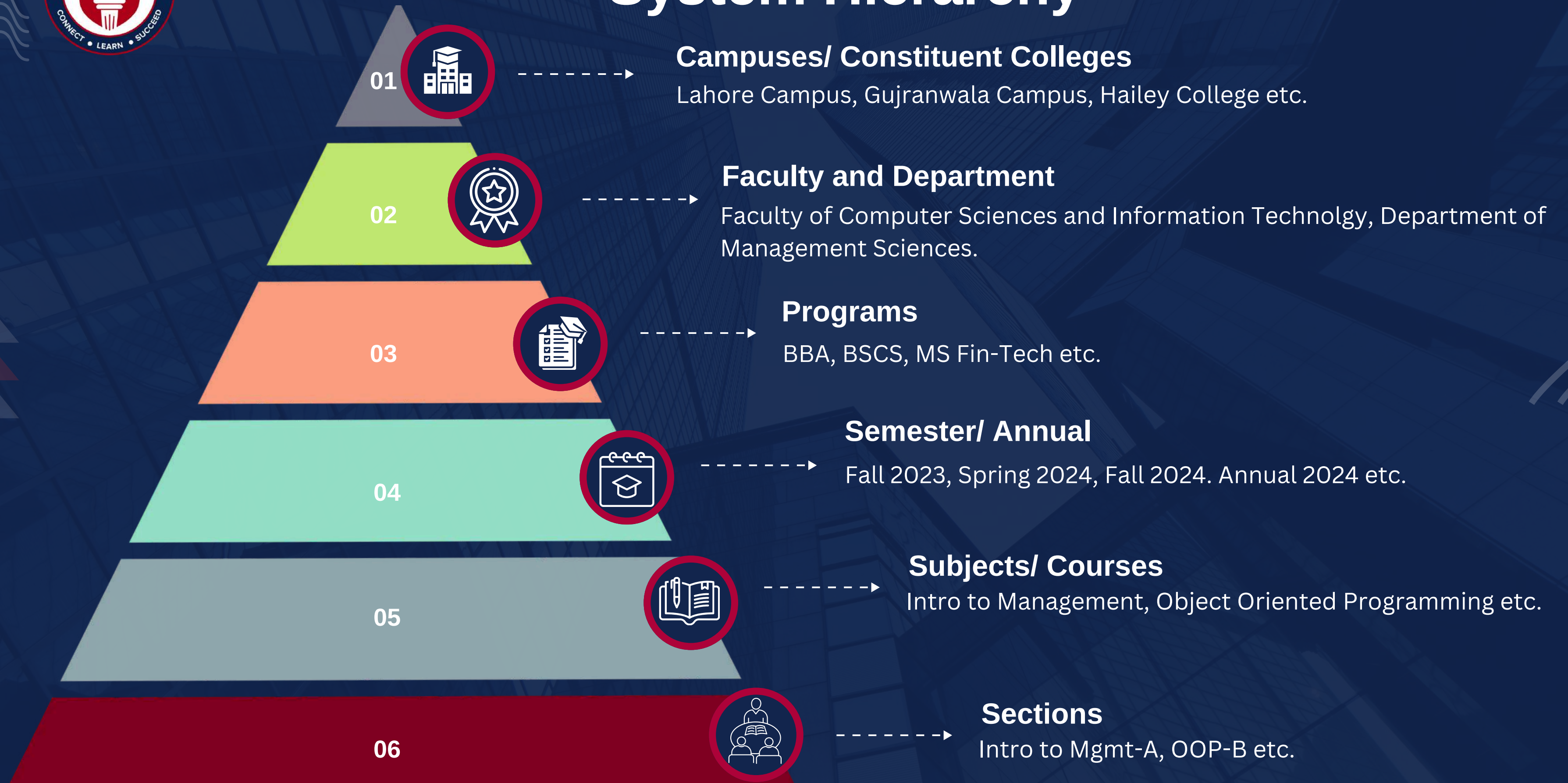
# System Hierarchy



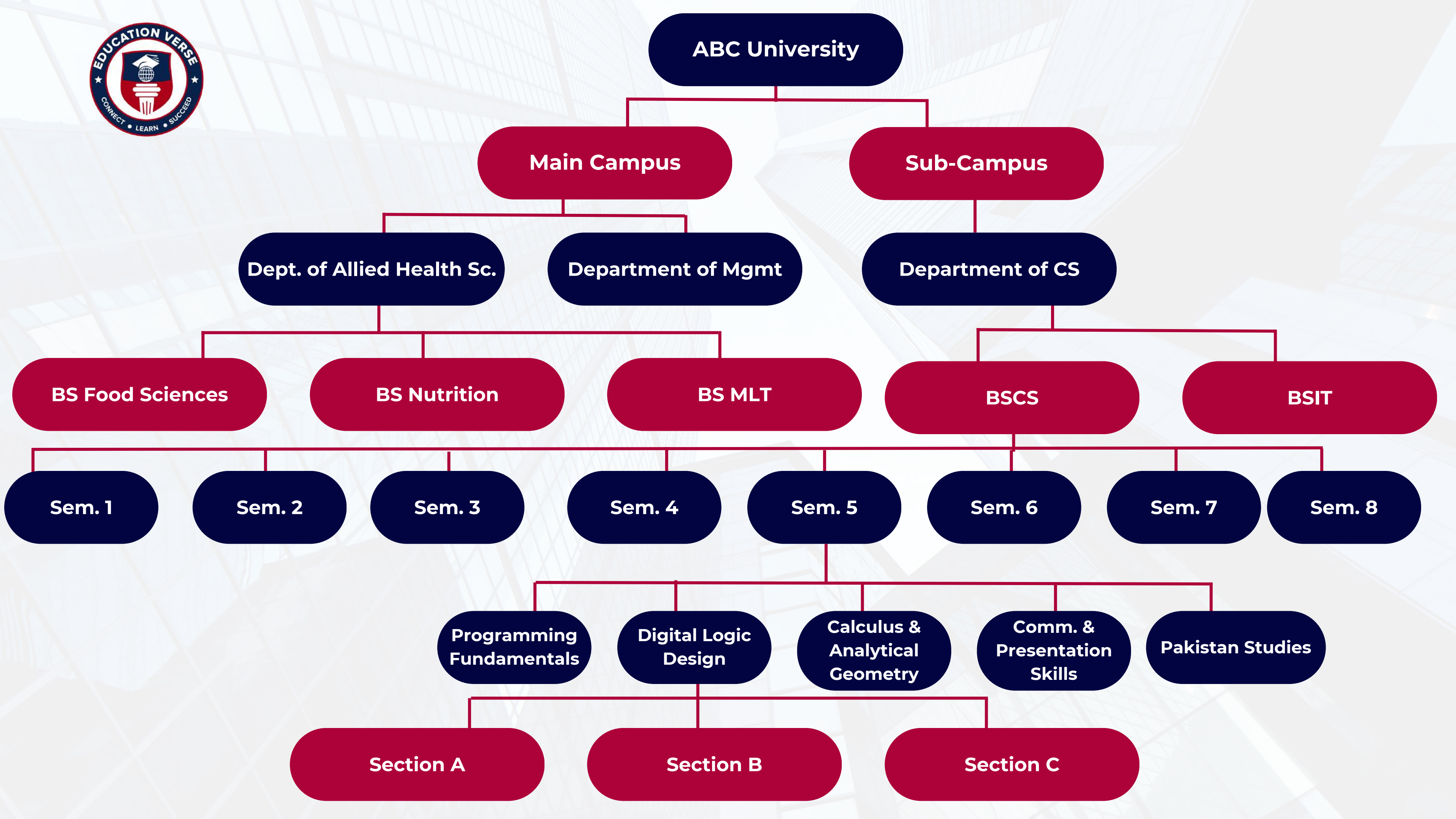




# System Hierarchy









# Why hierarchy is important?



## Streamlined Data Management

By organizing data according to a clear hierarchy, it becomes easier to manage, search, and retrieve information



## Customization and Flexibility

The hierarchical structure allows for customization at each level, accommodating the specific needs of different entities within the institution



## Enhanced Reporting

The hierarchy facilitates comprehensive and detailed reporting at any level



## Efficient Resource Allocation

Resources like Facultys, learning materials, or facilities can be allocated more efficiently by understanding the structure of the institute, campuses, and grades.



## Consistency and Standardization

The hierarchical model ensures that data entry and processes follow a consistent format across the entire system, reducing errors and ensuring standardization.



## Better Decision-Making

Hierarchical data helps administrators make informed decisions from the institute level down to specific sections or subjects.







# HEC's ODL Policy



# ODL Ready ERP

The HEC launched its Open and Distance Learning (ODL) Policy on 28 August 2024. This policy allows universities/ DAIs to offer online/ distance education, provided they meet HEC's criteria. It opens up opportunities for universities to expand their reach, provide flexible learning options, and attract a broader student base.

evERP is ODL ready and moving to our platform will give you the first-mover advantage to shift to ODL.

## HEC ODL Policy

### Asynchronous Model



In the Asynchronous learning model, students access self-paced courseware and learning objects via LMS, with online forums for Q&A and tools for quizzes and assignments.

### Synchronous Model



In the synchronous learning model, students interact with instructors in real-time online sessions, meeting credit hour requirements with features like whiteboards, two-way audio/video, and recorded lectures available on the LMS.

### Blended Model



The blended learning model requires at least one-third of credit hours to be conducted face-to-face or synchronously, with the remaining instruction delivered asynchronously, combining direct teaching, multimedia content, and evaluations.



# Essential Steps for ODL Approval



## Program/ Project Proposal Preparation

HEIs are required to create a comprehensive program/ project proposal for each ODL course before offering it.



## Risk Assessment & Management Strategy

A strategy must be developed to identify and mitigate risks associated with running the ODL program



## Approval by University Authority

The program/ project proposal must be approved by the relevant authority within the HEI before implementation.



## Monitoring and Implementation Mechanism

HEIs must establish a monitoring mechanism to ensure proper execution and compliance with the program's objectives.



## NOC by HEC & Publishing the Program

After obtaining NOC from HEC, HEIs must publish detailed information about each ODL program on their website, including fees, eligibility, and schedules





# Salient Features/ Modules





# Salient Features



## Dashboards for Decision-makers

evERP features a comprehensive dashboard designed to facilitate owners, sponsors and the governing body in making informed decisions. Using the concepts of business intelligence-based reporting, evERP provides summarized information on admissions, fee management, the number of programs, Faculty, and academic quality monitoring across all campuses. It can be customized according to the needs of the client.



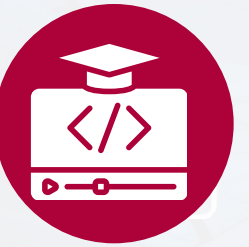
## User Management

This module allows for the addition, updating, and deletion of users, with the capability to grant access and permissions to specific modules, sub-modules, and features based on the functions they need to perform.



## Configurations/ Institute Set-up

This module offers a comprehensive set of tools to add campuses, allocate affiliation bodies, create University levels (Kindergarten, Primary, Middle and Senior etc.) and classes, set up sections and subjects, formulate policies, create fees (Registration, Admission, Security, Tuition and Other fees like Lab, Library, Sports etc.), and design assessments (Assignments/ Activities, Monthly tests, Mid-term, Final exam etc.). This ensures a flexible and tailored setup for every educational institution.



## Auto Course Coding

Course codes are automatically generated as per the HEC-accepted course coding schemes. In case the university wants to apply its own course coding scheme, the option of manual entry is also available.



## Admissions Management

Admission by Student/ Parent: evERP streamlines the entire admission process. Students or parents can apply online via an admission form, which the system administrator reviews. Upon approval, automated fee bills are generated as per policy. Once fees are paid and confirmed, the onboarding process is completed, granting students access to all academic modules through a dedicated portal.

Admission by Management: evERP also provides the flexibility for the Admissions department to enroll the students for walk-in enquiries.



## Fee Management

evERP includes a robust fee management module, enabling administrators to set fee structures for different programs and University levels. It also accommodates policies for scholarships, discounts, financial aid, and instalments. The system automatically applies these policies to generate student fee bills and challans, accessible through student portals. evERP facilitates multiple payment options such as Credit cards, Bank/ Fintech Co. transfers, PayPal, Cash. Sending fee reminders and follow-up of unpaid fee vouchers is also available. It also has the option for the fine management.



# Salient Features



## Timetable

This is an innovative scheduling system that generates automatic timetables based on input variables like Faculty' availability and their subjects, time slots defined by the University and room capacity. It ensures efficient allocation of resources and conflict-free scheduling for the Universitys.



## Attendance

The attendance module – catering to both, Biometric and Manual – efficiently tracks students' presence, absences, and leaves, providing detailed reports for comprehensive student monitoring. This feature ensures accurate record-keeping and enhances overall student management.



## Multiple Communication Channels

evERP integrates an inbuilt chat feature for classes and incorporates WhatsApp for external communication. Individual or departmental emails can be configured for sending the same to the students from the evERP platform. Moreover, 'Notifications' can be sent which are accessible by students/ parents through their portals



## Calendar

The calendar feature allows users to view events at the institute level and schedule personal tasks.



## Course Authoring

Effortlessly create and manage courses, defining course outlines, course learning objectives, lecture plans etc.



## Learning Resources

Faculty can upload learning materials, including documents (such as books, notes, worksheets, past/ model papers etc.) recorded videos and interactive content for their respective classes. These resources are accessible to students via their portals.

evERP provides the option of learning management to the Faculty, where they can opt for course authoring to create engaging content for students in the form of activity-based videos. Faculty can analyze the students' performance and advise them on the adaptive learning options.



# Salient Features



## Question Bank

Faculty can create question banks with short/ long questions, fill-in-the-blanks, true/ false, and MCQs. These banks are used to generate various assessments, including class tests, quizzes, monthly tests, mid-term and final exams.



## Teaching/ Learning Taxonomies & CLOs Mapping

evERP offers the option to configure multiple Teaching/ Learning Taxonomies and tag them to various programs. It also offers creating topic-wise CLOs and track the coverage of these CLOs through Course Progress Reports.



## Academic Management, Gamification & Learner's Profile

evERP offers flexible academic management, allowing Faculty to conduct classes, present learning resources, and play videos. It also supports the creation of interactive, activity-based videos to enhance class engagement, student grooming and personality development.



## Online classes

Students can seamlessly attend their online classes through our evERP platform, which integrates and pre-configures various video conferencing tools like Zoom, Google Meet, and Microsoft Teams, ensuring a smooth and efficient virtual learning experience..



## Discussion Boards/ Chat

Students also have the facility to chat with other class fellows and the teacher. The Chat Group is for every subject or course in which the student is enrolled.



## Course Progress Report

The Course Progress Report is a powerful tool that allows for tracking and monitoring Faculty progress in delivering course content. It ensures that academic goals are met and provides insights into the pace and effectiveness of instruction.



## Assessment/ Exam Builder

The platform supports the creation and administration of various exams/ assessments (class tests, quizzes, assignments, monthly tests, mid-term, final exams etc.) through the Questions Banks.



# Salient Features



## Exam-marking and Result Preparation

evERP supports auto-marking for objective questions and generating result cards/ mark sheets which are accessible through the student portals.



## Course Folders

evERP offers the option to create digital course folders which can be printed with a single click. These course folders would include all the essential documents as per the HEC requirements.



## QEC

erERP comes with a detailed module of QEC. Where all the proformas related to QEC are filled by the stakeholders in the system and detailed analytics provide the foundation for continuous quality assurance of the programs offered at the university.



## Clubs and Societies

This module allows to form clubs and societies dynamically and easily add members. Events are scheduled effortlessly, and registrations are managed for any event within the system.



## Alumni Management

The Alumni Management module keeps a comprehensive database of alumni, including their personal and professional details. They get connected with event updates and exclusive career opportunities through job postings.



## Transport

The Transport module allows students to choose from pre-decided transport routes, ensuring smooth route management. The system generates a list of students availing the facility, allocates vehicles, and provides driver credentials.



## Hostel

The Hostel module includes room allocation and reservation, fee management, and occupancy tracking. It can handle hostel attendance, visitor management, and room change requests.



# Salient Features



## Feedback/ Survey Management

- Set Feedback/ Survey questions of your choice for students/ parents and Faculty
- Take feedback or conduct surveys from various stakeholders
- Gain valuable insights into user experience with 'Feedback Analytics' ensuring continuous improvement and high standards



## Reports

The Reporting Module provides customized, flexible reporting tailored to the specific needs of each University. Currently, the system includes a variety of reports, covering areas such as users, admissions, revenue, attendance, and daily class schedules, ensuring comprehensive data analysis and insights.



## Human Resource Management (includes Payroll)

evERP has a comprehensive human resources management system that simplifies HR processes and enhances employee engagement. It offers modules for employee management, attendance, leaves, timesheets, recruitment and payroll.



## Customer Relationship Management (CRM)

evERP has a thorough customer relationship management system with dedicated modules for enquiries, follow-ups, and customer management. Its powerful tools enable seamless communication, detailed customer insights & effective sales tracking.



## Accounts

The evERP Accounts Module offers a comprehensive suite of features essential for effective financial management. It includes tools for booking and tracking transactions, managing resources, generating financial reports and ensuring accurate and efficient accounting for your educational institution.



## POS (for cash fee, inventory and petty cash)

The POS Module provides robust functionality for receiving fees in cash, alongside managing inventory and petty cash. This ensures streamlined financial operations and efficient tracking of resources and expenditures within the institution.





# Portals/ Panels

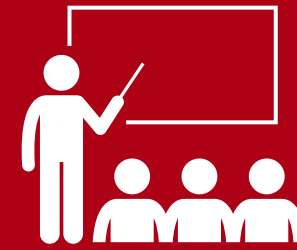


# Portals/ Panels



## Administration

Users: Head of Institution,  
Accounts Head, Coordinator,  
Heads of Academic Departments



## Faculty

Whether Permanent or Visiting

evERP



## Student

For all their academic and support  
services needs

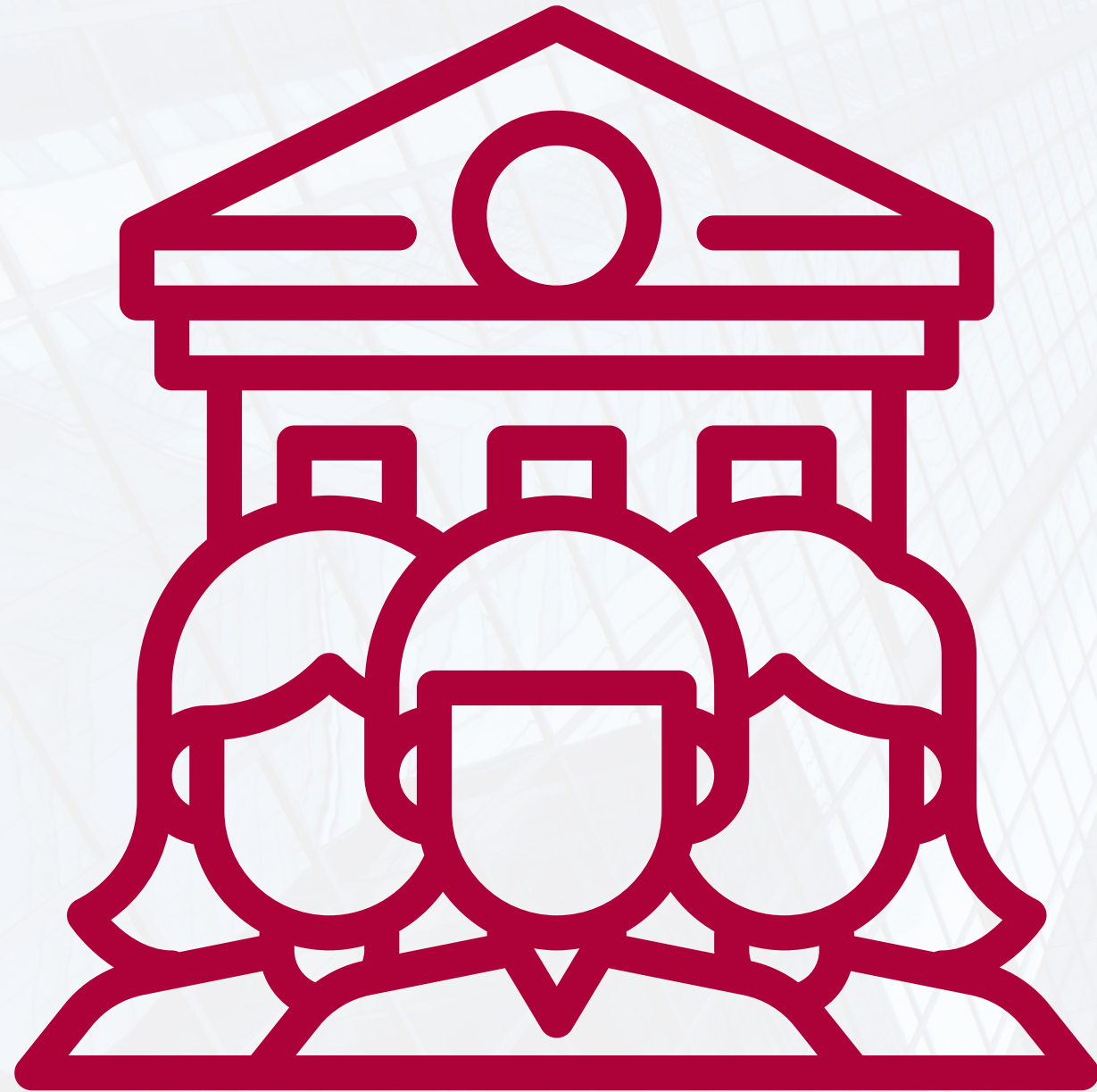


## Alumni

For all the support services and  
recruitment needs of the Alumni



# Governing Body Portal/ Panel



## Admissions

- Detailed Reporting about Admissions



## Revenue

- Detailed Reporting about Admissions
- Received vs Unpaid Fee Reporting



## Quality of Academics

- Monitoring & Control through Course Progress Reports



## Quality of Exams/ Assessments

- Monitoring & Control
- Exam/ Assessment Resources Review



## User Feedback

- Complaints
- Feedback



# Student Portal/ Panel



## Dashboard

- Courses
- Fees
- Attendance



## Fee Management

- Scholarship/ Financial Aid
- Fee Payment



## Contents

- Academic Calendar
- Timetable
- Accessing Study Material & Videos
- Attending Classes – Live or Recorded



## Communication

- Chat Groups
- Receiving Emails
- Notifications/ News



## Assessments

- Labs/ Project Presentations
- Quizzes/ Mocks/ Practice Session
- Assignments
- Mid/ Final Term Exams

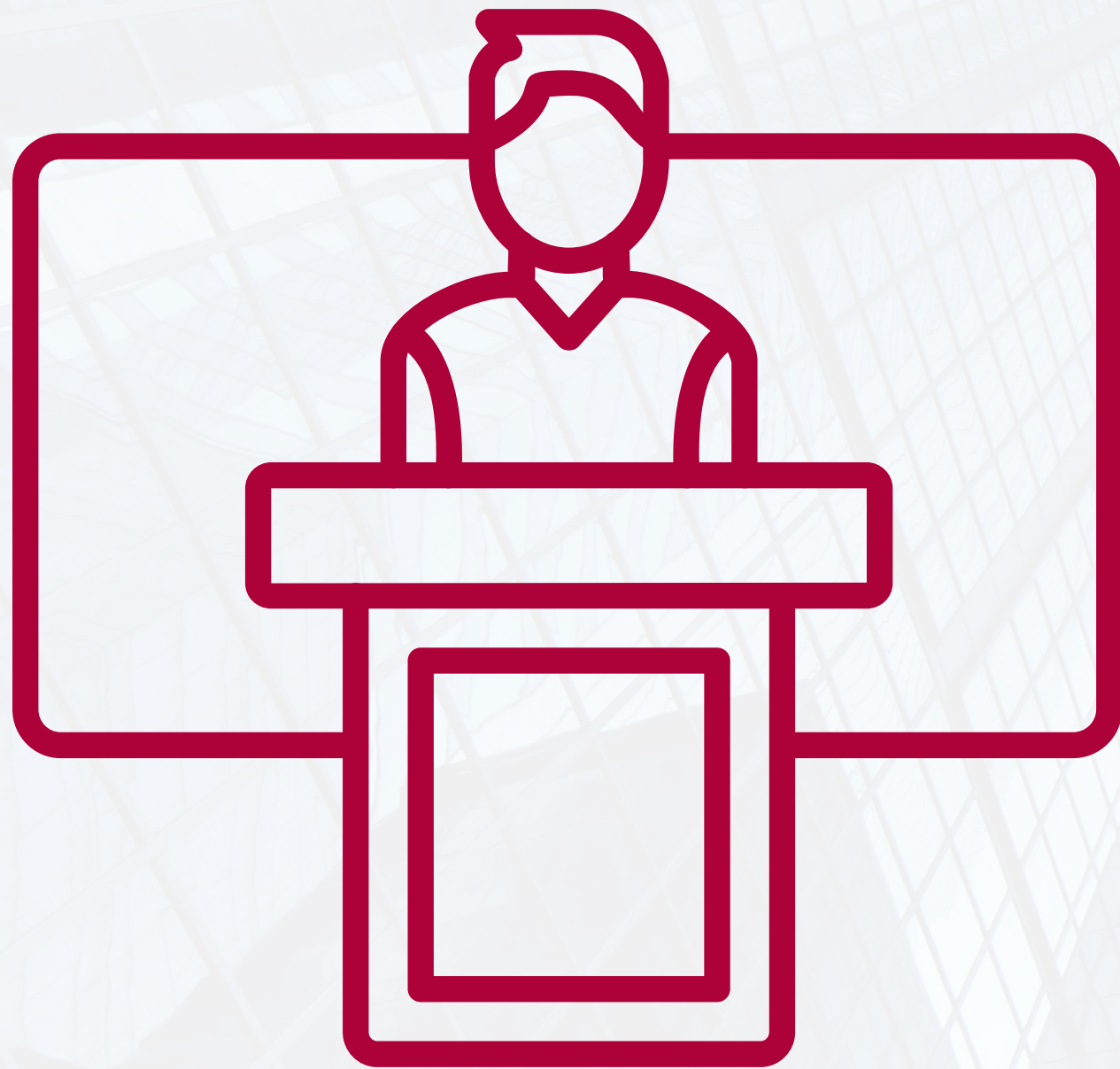


## Complaints & Feedback

- Feedback about the Platform
- Feedback based on Questions
- Complaints



# Faculty Portal/ Panel



## Dashboard

- Timetable
- Live Classes
- Courses



## Question Bank

- Uploading and Editor Facility
- Answer logic
- Difficulty level
- MCQs, True/ False, Fill in the Blanks, Short & Long Questions



## Learning Resources

- Videos
- PDFs



## Exams/ Assessments

- Quizzes
- Assignments
- Practice Sessions, Mocks
- Mid/ Final Exams



## Award Lists

- Configurable, Automated and Manual



# Administration Portal/ Panel



## Dashboard

- Users
- Admissions
- Revenue
- Academic Monitoring
- Events
- Feedback/ Complaints



## User Management & Access Control

- All Users
- Dynamic Roles & Permissions



## Configuration

- Campus
- University Levels
- Classes
- Academics
- Assessments
- Grading Criteria
- Transcript
- Fee
- Scholarships



## Admissions

- Approve/ Reject
- Allocate Sections



## Fees

- Fees Receivable
- Installments
- Scholarships/ Financial Aid
- Approve Paid Fee Bill



## Attendance

- Manage Attendance
- Reporting



# Administration Portal/ Panel



## Academics

- Academic Calendar
- Timetable
- Course Progress Report
- Learning Resources
- Live/ Recorded Classes
- Courses



## Assessments/ Exams

- Date Sheet
- Roll Number Slips
- Giving Assessments/ Exams



## Results

- Award Sheet
- Result Card
- Gazette
- Transcript
- Degree



## Quality Assurance/Feedback

- Make your Feedback Questions
- Evaluate Student Feedback



## Reporting

- In-built and On-demand Reporting



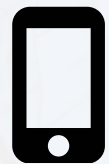
# ev Mobile Application

EducationVerse proudly presents its mobile application, bringing the full capabilities of our advanced educational ERP system to your smartphone or tablet.



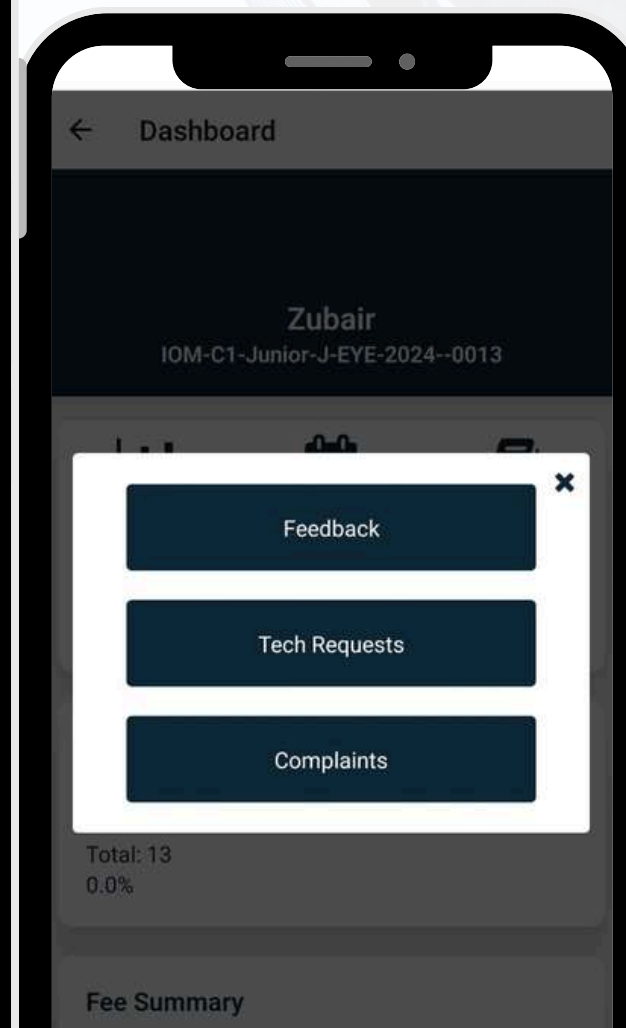
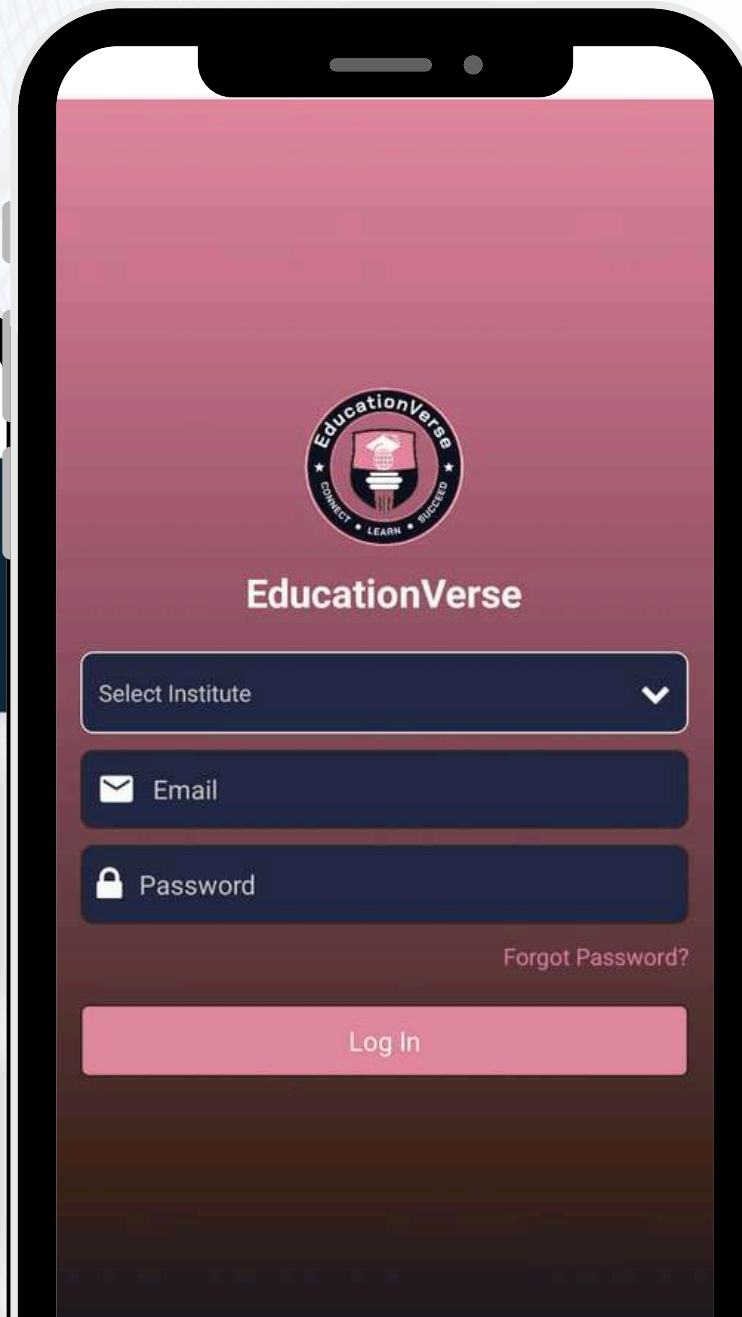
## ACCESSIBILITY

- Easy access to educational resources and management
- Quick access to essential tools and resources



## EASY TO USE

- An intuitive interface
- Effortless navigation



## FOR STUDENTS

- Convenient Access
- Enhanced Learning
- Real-Time Updates



## FOR FACULTY

- Work anytime from anywhere
- Interactive Teaching
- Performance Monitoring





# Thank you for your attention!

## Contact Us:

+92 321 8487 144 | +44 (0) 7939 321 830

[www.educationverse.org](http://www.educationverse.org)

[info@educationverse.org](mailto:info@educationverse.org)

